

VBNC'S WINTER SHIPPING PROGRAM

Voisey's Bay Nickel Company Limited (VBNC) began shipping concentrate from Edward's Cove in the fall of 2005. For normal operations, the annual shipping program will be as follows:

December 7 – January 21	No Shipping
January 22 – April 6	Four (4) Nickel Shipments
April 7 – May 21	No Shipping
May 22 – December 6	Shipping of Nickel & Copper plus any other shipments

For the winter of 2006 there will be two (2) voyages. One in late January and one in late March or early April.

Starting with the first voyage in January 2006, for the winter shipping period of January 22 – April 6, VBNC will mark the ship's track with reflectors every 250 meters along the track and will provide designated safe crossing areas as shown on the map. Each winter the ship will choose either the northern or southern route. Once the route is chosen, it will remain the same for all voyages during that winter.

The blue crossings will be constructed after the ship has gone into Edward's Cove and the blue plus the red will be constructed after the ship has left. Each safe crossing will have a sign with lights and the sign will say whether the crossing is safe or unsafe to cross.

If you are leaving Nain, a VHF Pager can be obtained through Isabella Pain, Ron Webb or Gus Dicker. Isabella Pain can be reached at the VBNC office in Nain, Monday through Friday during working hours, and Ron Webb and Gus Dicker at the Sikumiut office. Once these pagers are turned on, you will receive up-to-date information on the ship's activities. When you pick up the pager, you will receive instructions on how to use it.

If you do not know the ship's activities, go to a safe crossing location and the sign will indicate whether the ship's track is safe to cross.

How can you find out about the ship's movement?

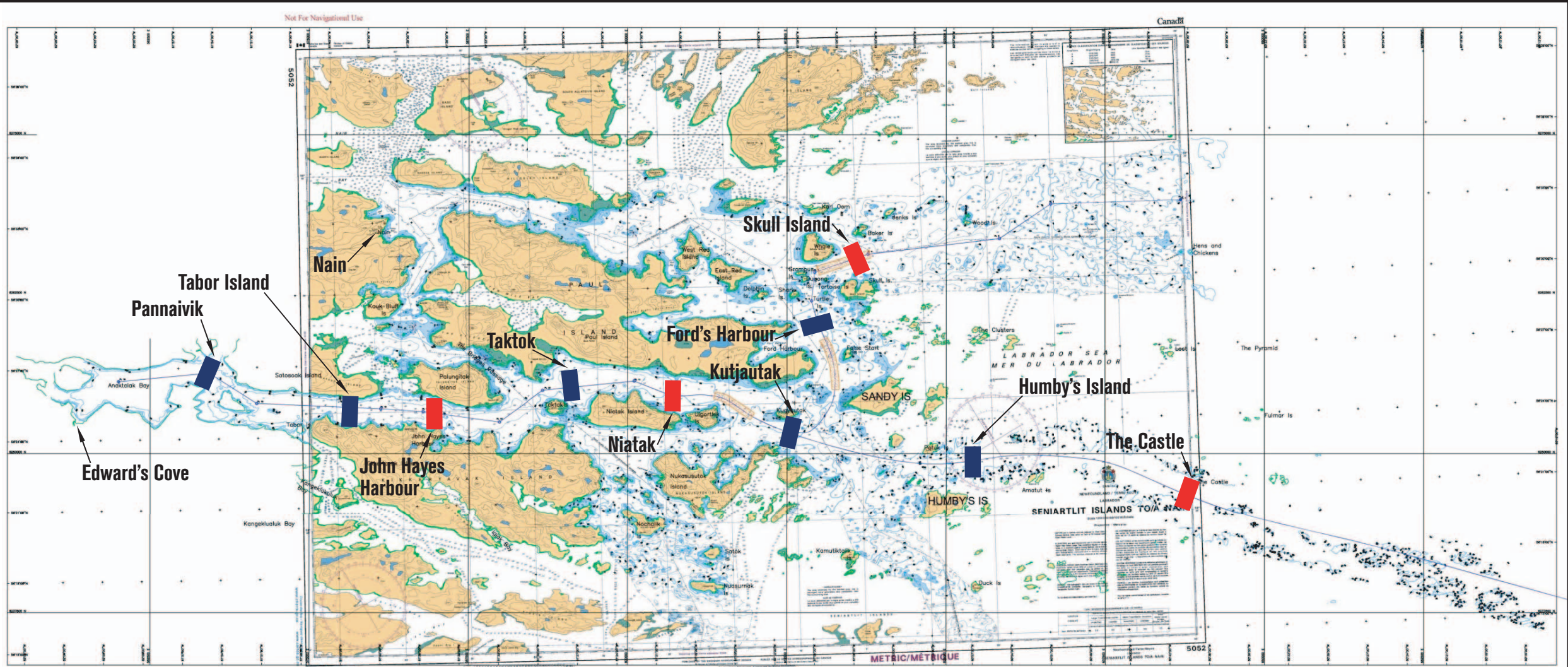
1. Call the VBNC Shipping Line at 1-877-922-7447 to get current information.
2. Call the VBNC Site at 1-709-922-4437 to speak with someone.
3. Visit VBNC's web site at vbnc.com
4. Listen to the OK Society radio for regular updates.



**VOISEY'S BAY NICKEL
COMPANY LIMITED**

A subsidiary of Inco Limited

SAFE TRAVEL ICE CROSSINGS



- Blue crossings will be constructed after entering and exiting Edward's Cove
- Red crossings will be constructed only after the ship has exited Edward's Cove